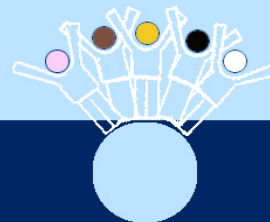


Griffith Public School

A quality education for all



NEWSLETTER TERM 4 WEEK 2

Principal: Miss Jude Hayman

Coolah Street, Griffith NSW 2680 T 6962 3199 F 6962 3451 E griffith-p.school@det.nsw.edu.au

Term 4 2012

Calendar

*Please note dates from week to week as there are occasionally some changes.

Week 2

Tuesday October 16 th	Year 2 Excursion
Wednesday October 17 th	Camp Quality Visit <u>P&C Meeting 7pm</u>
Friday October 19 th	Grandparent's Day K-6 Assembly

Week 3

Wednesday October 24 th	Stage 3 Excursion
Thursday October 25 th	Stage 3 Excursion
Friday October 26 th	Stage 3 Excursion

Week 4

Wednesday October 31 st	2.15pm Kinder 2013 Orientation Meeting
Friday November 2 nd	K-6 Assembly

Week 5

Tuesday November 6 th	2pm Kinder 2013 Orientation
Wednesday November 7 th	2pm Kinder 2013 Orientation
Friday November 9 th	School Fete

Week 6

Tuesday November 13 th	2pm Kinder 2013 Orientation
Wednesday November 14 th	2pm Kinder 2013 Orientation
Friday November 16 th	K-6 Assembly

Week 8

Thursday November 29 th	6.30-8pm K-2 Frolic
------------------------------------	---------------------

Friday November 30 th	K-6 Assembly
----------------------------------	--------------

Week 9

Tuesday December 4 th	Stage 2 Excursion
Wednesday December 5 th	Stage 2 Excursion
Thursday December 6 th	10.30am Presentation Day

Week 10

Thursday December 13 th	Year 6 Farewell
Friday December 14 th	10am Year 2 Graduation K-6 Assembly Reports sent home

Week 11

Wednesday December 19 th	Last day of term Four
-------------------------------------	-----------------------

Griffith Show

Congratulations to all the students who entered the show this year. Thank you to Mrs Tyrrell for organising the entries and to the class teachers for their work with the students in creative and practical art lessons.





Grandparent's Day

This Friday, October 19th, Grandparents are invited to come along to a special 'Grandparents Afternoon' at 12.30 pm when they can visit their grandchild's classroom and then attend our K-6 Assembly. Grandparents will then be invited to collect a 'light' afternoon tea and join their grandchildren in the playground for Fruit Break. We look forward to seeing many grandparents at school next Friday.

2013 Kindergarten Orientation

Orientation for those children beginning Kindergarten in 2013 will commence on Wednesday 31st October at 2.15pm in the school hall.

Following this initial meeting, further sessions will be held from 2.15-3pm on;

Tuesday 6th November

Wednesday 7th November

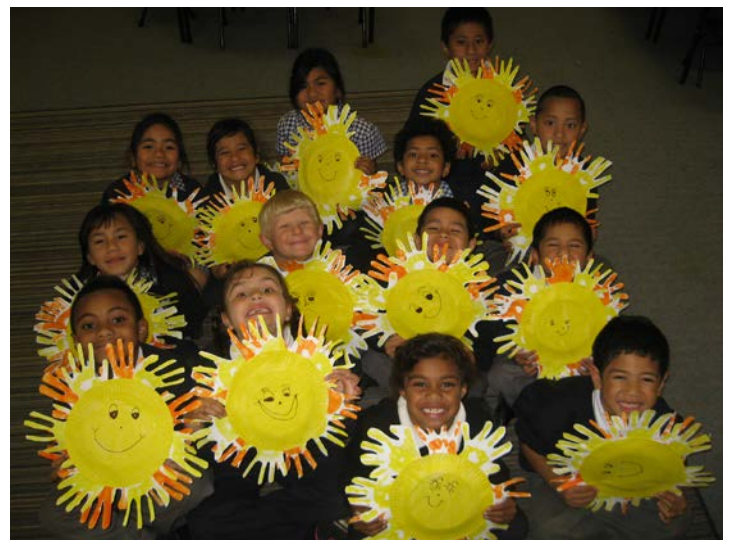
Tuesday 13th November

Wednesday 14th November

Notes will be posted to families who have already enrolled students. If you know of families in the community who have children starting school next year, please encourage them to enrol at school as soon as possible.

KB

KB have been working hard for Miss Cundy and Mrs Bye. Here they are displaying their fantastic art work!



P&C News

Our next meeting will be held this **WEDNESDAY 17TH OCTOBER at 7pm.**

Please come along and help us organise the P&C Fete, which will be held on Friday 9th November.

We will also be discussing K-6 assembly times and Griffith HS, Relieving Principal, Mr Charlie Cochrane will be attending to discuss their trial usage of the old Kalinda School site.

There will be a lucky door prize of a \$10 canteen voucher.

Thank you,
Helen Lander

Assembly Awards

Congratulations to the following students who received awards at last week's assembly:

KB Jordan Manuopo Tiare-June Orake Timote Liu	KV Savanna Reynolds Kathleen Asomua Mele Tuitufu
KL Charlotte-Jayne McDonald John Samuelu-Kirby Sabrina Marela	KM Dev Patel Harjas Singh Sophia Langman
1B Mele Brien Savannah Stewart Luke Tonga	1F Kashvi Shah Tristen Irvin Joshua Ratuverebukui
2L Chris Tupuola Oriana Samuelu Kirby Minata Misi	2D Tanisha Lualua Lee Manuopo Dhruvi Chaudhary
2B Devarsh Pancholi Joany May Abria Raymond Halaapiapi	3R Kyla Rand Reuben Leao-Seve Simpson Jerry Musu
3S Shakia Charles Kyle Smyth Jesse Ratuverebukui	4B Rossana Tupa Blake Mallise Noah Carberry-Beale Lailana Toohey
4T Leon Bamblett Jack Christian Wycliff Tuiaki	

Surveys

Last term parent surveys were sent home and returned completed surveys were to be placed in a draw to win canteen vouchers. The draw will now take place at the K-6 Assembly on Friday.

Halloween Out of Uniform Day

On Friday November 2nd (Friday Week 4), the SRC will be holding a "Halloween" Out of Uniform Day. Students are asked to come to school wearing their favourite and most creative Halloween costumes. Students will also need to bring a gold coin donation for wearing their Halloween costume on this day. The SRC will judge the best Halloween costumes on the day. Those children will receive a small Halloween prize.

Canteen News

Wednesday 17 th	Anne Kelton
Thursday 18 th	Cathy
Friday 19 th	Elena
Monday 22 nd	Elena
Tuesday 23 rd	Kerri

Thank you to last week's helpers Kerri Sutton and Agnes Lolohea.

Nuggets	\$3
Pluto Pups	\$3
Chicken Wraps	\$3

Fete-Mystery Jars

WANTED for the 'Mystery Jar' stall for the school fete-please send a long a 'Mystery Jar' filled with lollies, novelties etc. to your child's teacher. If each child is able to donate at least one jar then we will have a fantastic "mystery Jar" stall at the fete. Thank you in anticipation of your support.

National Nutrition Week October 14th – 20th

Water – Tap into it!

- Carry a water bottle with you
- Have a drink of water with your meals and snacks
- Keep fluids cool, this encourages drinking

If you are feeling thirsty then you are probably already dehydrated.

GPS Mini Fete

Friday 9th November

1pm– 3pm



- * SAUSAGE SIZZLE
- * SING STAR
- * JUMPING CASTLE
- * WHITE ELEPHANT STALL



- * MYSTERY JARS
- * SAMPLE BAGS
- * GO CARTS
- * DRINKS & ICE BLOCKS & LOTS MORE



Come to the Fete, it will be great!

BARELLAN & DISTRICT REP NETBALL TRIALS 2013

DATE: 28TH of October, 2012

TIME: 12's (born 2001, 2002) – 9.00am
 13's (born 2000) – 10.00am
 14's (born 1999) – 10.30am
 15's (born 1998) – 11.30am
 17's (born 1997 and 1996) – 12.45pm

VENUE: Barellan Sports Ground

Commitments:

1. Weekly Training, starting February 2011.
2. 3 carnivals plus State Ages in July or State Championships in June.

A team of up to 10 players will be selected at the tryouts. The selection panel consists of Carolyn

Burgess, Karen Conlan, Emma Burden Sally Fairman and Jodie Landy.

Coaches – we welcome and encourage **expressions of interest** for coaching positions. For further information please contact:

Karen Conlan (president)

conlanfamily@bigpond.com 0467642109

Jodie Landy (rep coordinator)

jodielandy@msn.com 0429639116

Carolyn Burgess (Head coach)

carolyn.burgess@gsd.com.au 0404 472537

GRIFFITH CITY LIBRARY
 invites you to our
BOOK FAIR
 THURSDAY OCTOBER 18
 from 3-6pm
Collins Booksellers Griffith
& Sound Text Media
 A Huge Range of: Bio's Gifts! DVD's
 Talking Books Fiction Classics
 Picture Books COOKBOOKS Non Fiction
 Puppets
 For more information please contact Monica or Rina at Griffith City
 Library on 69 622515, or email library@griffith.nsw.gov.au

Win a \$5.00 Canteen Voucher Week 2

Give your newsletter to your parent or carer to read. Ask them to sign this slip and put it in the box in the front office. If your slip is drawn out at Friday's assembly, you will win one \$5 canteen voucher! Two slips will be drawn out at each assembly.

Student/Family Name _____

Parent/Carer Signature _____