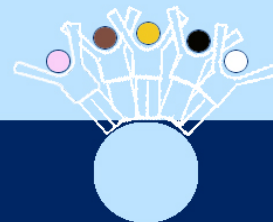


Griffith Public School

A quality education for all



NEWSLETTER TERM 3 WEEK 2

Principal: Miss Jude Hayman

Coolah Street, Griffith NSW 2680 T 6962 3199 F 6962 3451 E griffith-p.school@det.nsw.edu.au

Term 3 2013

Calendar

*Please note dates from week to week as there are occasionally some changes.

Term 3

Week 2

Thursday, July 23 rd	Year 6 W & M Transition to High School
	Kinder Excursion to the Griffith Library
Friday, July 26 th	K-6 Assembly-Griffith High School Hall

Week 3 EDUCATION WEEK

Monday, July 29 th	9.45am Open Classrooms
	10.30am Education Week Assembly Griffith High School Hall
Tuesday, July 30 th	10.30am School Choir perform at Griffith Plaza
Wednesday, July 31 st	10am KB & KL Perform at Griffith Plaza
Thursday, August 1 st	KROP Matinee and Evening Performance
	Year 6 T & C Transition to High School
Friday, August 2 nd	KROP Matinee and Evening Performance

Week 4

Wednesday, August 7 th	Years 2-6 Spelling Bee
	7pm P&C Meeting
Thursday, August 8 th	Year 6 W & M Transition to High School
Friday, May 24 th	K-6 Assembly Griffith High School Hall

Zone Athletics Carnival

Week 5

Wednesday, August 14 th	Trent Barrett Shield
Thursday, August 15 th	Year 6 T & C Transition to High School

Week 6 Life Education Van Visit

Thursday, August 22 nd	Year 6 W & M Transition to High School
Friday, August 23 rd	K-6 Assembly

Week 7-Life Education Van Visit

Thursday, August 29 th	Year 6 T & C Transition to High School
Friday, August 30 th	Dad's and Donuts
	P&C Father's Day Stall
	Riverina Athletics Carnival

Week 8

Wednesday, September 4 th	Production Rehearsal
Thursday, September 5 th	Matinee and Evening Performance GPS 'Magical Musical Mystery Tour'
Friday, September 6 th	K-6 Assembly
	Year 4 Pioneer Park Action Day

Week 9

Thursday, September 12 th	Year 6 T & C Transition to High School
--------------------------------------	--

Week 10

Thursday, September 19 th	Year 6 W & M Transition to High School
Friday, September 20 th	K-6 Assembly
	Last Day Term 3

Welcome Mrs Russo and Ms Nardi

We are very happy to welcome Mrs Elise Russo and Ms Lisa Nardi to Griffith PS.

For the remainder of 2013 Mr Workman is relieving as Principal at Whitton PS. At the beginning of 2014 he will be an Assistant Principal at Hanwood PS. We wish Mr Workman all the best and thank him for the wonderful job he did while teaching at Griffith PS. He will be missed by students, staff and parents as he was a well-respected member of our school community.



Mrs Russo will be teaching 5/6 W for the remainder of the year. Mrs Russo has been working at the school as a relief teacher and we are fortunate to have her as part of our staff.



Griffith PS is one of 50 schools in NSW to be appointed an Instructional Leader. Instructional Leaders work with teaching staff at a school, building the capacity and expertise of teachers in the use of explicit literacy and numeracy strategies to continue to improve the performance of their students. We are very happy to welcome Ms Lisa Nardi to this position at Griffith PS. Ms Nardi has been an Assistant Principal at Hanwood PS for many years and prior to that taught at Lake Wyangan PS and Griffith PS. We welcome her back!



Ms Nardi and Miss Hayman will be attending a conference in Sydney on the 29th and 30th of July about the Instructional Leaders role.

KROP 2013

The KROP rehearsal took place on Tuesday 16th July. The students were a credit to our school and themselves. We are now polishing our performance so it is GREAT!

Thank you to the wonderful parents who have helped us with costumes. Special thanks to Kerri Sutton who volunteered two days to help, Mrs Lander, Mrs Woods, Mrs McWhirter and also Mrs Tyrrell who spent a lot of their holidays sewing and preparing costumes.

Thank you to Shawn Pattison, Leon Bamblett and Lakeesha Nayden who helped make the sticks for the boys to use in New Zealand KROP item.

Special thanks to Kana Marela, her sister Rosie and mum Penaia who made so many headbands and waistbands in the traditional Maori style. They look sensational! Thank you to Jackie Tupa who helped finish off the pois.

Our item will be wonderful because of the help and support of our wonderful parents and students.

The KROP spectacular will be held on Thursday 1st and Friday 2nd August, 2013. If you would like tickets you must contact Griffith Regional Theatre.



Week 2 and Education Week Assembly

We are unable to use our hall at present as the floor is being repaired so we will be holding our Week 2 and Education Week Assemblies at the Griffith High School hall. We encourage parents and family members to attend. This Friday's assembly will commence at 1pm and the Education week assembly will commence at 10.30am on Monday. When entering Griffith High School grounds please enter via the car park entrance gate as all other gates will be locked.

PBL Colours Day

Next Monday as part of Education Week, we will be celebrating Positive Behaviour for Learning (PBL) at our school. Students are asked to wear a PBL coloured shirt and each grade has been assigned a specific colour. The colours are: K-2 – **Purple**, 3-4 – **Green**, 5-6 – **Orange**. This is not a casual clothes day and if your child does not have this coloured shirt they are still required to dress in FULL school uniform.

Breakfast Club Volunteers

We are very fortunate at GPS to have many volunteers from the community helping to run our breakfast club. Thank you to Isabel Brown who volunteers her time to keep our Breakfast Club running. We are also fortunate to have the support of the Red Cross who keep us supplied with cereal and run the training for our volunteers.

Thank you to the following people who are volunteering on a regular basis; Isabel Brown, Ruth Legge, Kathleen Riggs, Narelle Bourke, Jeanette Hoffman, Barbara Sergi, Pearl Orake, Dawn Milne, Tracey Yerbury, April McKay and Barry Lees.



Premiers Spelling Bee 2013

Congratulations to those students who have made it through the first round of the School Spelling Bee held in each Year 2-6 class rooms last week. The top 3 spellers will now participate in our School final to be held on Wednesday 7th August in the Library. Students have received a note and spelling lists to revise in preparation for the finals. The top 2 spellers in Stage 2 and 3 will then progress to the regional finals held later this term, dates to be announced. This is usually held in Griffith. The Year 2 spellers will not progress from the school final. They are included for the wonderful experience.

Practise those lists and remember to learn **about** the words and what they mean. The skill of 'chunking' is vital when spelling words orally. Good luck everyone.

3/4L Frozen Raspberry Yoghurt

Last Friday 3/4L followed a recipe as part of their focus on Procedural texts. They made Frozen Raspberry Yoghurt. The students had lots of fun and their room smelt delicious all day. 3/4L had a taste test after fruit break and it was splendid! Mrs Lemon took lots of photos of the class busily making the tasty yoghurt. Hands on experiences are a terrific way to learn. Thank you Mrs Lemon for organising the fun lesson.



Thank you

Thank you very much to Lizzy Garside's family for donating five 'mini beast' sets to the school.



These valuable sets will be put to good use in the classrooms and the Library.

Merit Certificates Week 1 Term 3

5/6C Lakeesha Nayden Edwige Tamata Faaso Fuvai	5/6M Kyhisha Morris Sharon Nauer Harkirat Kaur
5/6T Priscilla Tierie John Taunisila David Halaapiapi	5/6W Montell Murray-Craven Bianca Sutton Ilijah Alai Lokeni

P&C News

The next P&C meeting is on Wednesday 7th August at 7pm in the staffroom.

Don't forget next week is Education Week and our children are involved in lots of different activities. Come to school on Monday and visit your child's classroom and then come to our special Education Week Assembly. Have a look in the calendar at the beginning of the newsletter for other activities, so we can support our children and teachers.

Remember that our school production "Magical Mystery Tour" is on **THURSDAY 5th SEPTEMBER**. Tickets go on sale on Monday 5th August. Invite all your friends and relatives. It is so wonderful to see our children performing on stage. Thank you to the staff at GPS for giving our children such a wonderful experience.

Our Father's Day stall will be held on Friday, 30th August.

Helen Lander P&C President

School Canteen

Wednesday 24 th	Siosi
Thursday 25 th	Kerri
Friday 26 th	Elena
Monday 29 th	Elena
Tuesday 30 th	Rachel

Thank you to last week's helper, Agnes Lolohea.

Pies	\$3
Nuggets	\$3
Chicken Burgers	\$3.50
Pluto Pups	\$3

Win a \$5.00 Canteen Voucher Week 2

Give your newsletter to your parent or carer to read. Ask them to sign this slip and put it in the box in the front office. If your slip is drawn out at Friday's assembly, you will win **one \$5 canteen voucher!** Two slips will be drawn out at each assembly.

Student / Family name: _____

Parent / Carer Signature: _____

Education Week

Griffith Central July 29 – 2 August 2013



Celebrate the quality education and wonderful achievements of our local public schools with our highly talented students and teachers.

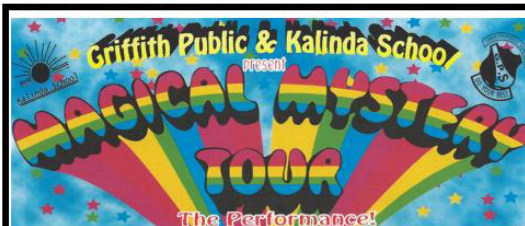
TUESDAY 30 JULY

TIME	SCHOOL
10.00am	Griffith North Public School
10.15am	Tharbogang Public School
10.30am	Griffith Public School
10.45am	Hanwood Public School
11.00am	Griffith East Public School
11.15am	Darlington Point Public School
11.30am	Yenda Public School
11.45am	Wade High School
12.00pm	Wade High School
12.15pm	Beelbangerang Public School
12.30pm	Yoogali Public School
12.45pm	Kalinda School
1.00pm	Lake Wyangan Public School
1.15pm	Beelbangerang Public School
1.30pm	Yoogali Public School
1.45pm	Wade High School

WEDNESDAY 31 JULY

TIME	SCHOOL
10.00am	Griffith Public School
10.15am	Kalinda School
10.30am	Lake Wyangan Public School
10.45am	Griffith North Public School
11.00am	Wade High School
11.15am	Griffith East Public School
11.30am	Yenda Public School
11.45am	Binya Public School
12.00pm	Griffith High School
12.15pm	Griffith High School
12.30pm	Griffith High School
12.45pm	Tharbogang Public School
1.00pm	Pool A – Local School Debate Griffith North PS versus Beelbangerang PS
1.45pm	Hanwood Public School

Education Week 2013 in the Griffith Central is proudly supported by:



Magical Mystery Tour

Thursday 5th September.

11am & 6pm

at the

Griffith Regional

Theatre.

Tickets will be going on sale on

MONDAY 5TH AUGUST

Tickets can only be purchased

at the

Griffith Regional

Theatre.

All tickets are \$10.00 each.

Children attending GPS **do not** need to purchase a ticket.

All children at GPS will be

on the stage.

DON'T MISS OUT!!

TICKETS SELL FAST!!