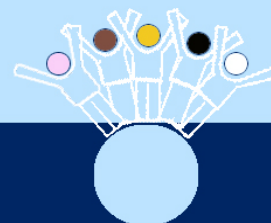


Griffith Public School

A quality education for all



NEWSLETTER TERM 4 WEEK 2

Principal: Miss Jude Hayman

Coolah Street, Griffith NSW 2680 T 6962 3199 F 6962 3451 E griffith-p.school@det.nsw.edu.au

Calendar Term 4 2014

*Please note dates from week to week as there are occasionally some changes.

Week 2

Wednesday, October 15 th	State Athletics Carnival
Thursday, October 16 th	Year 6 Transition to Griffith High School

Week 3

Friday, October 24 th	1.30pm Grandparent's Day 2.15pm K-6 Assembly
----------------------------------	---

Week 4 School Library BOOK FAIR

Wednesday, October 29 th	2.15pm Parent Meeting for Kindergarten students starting in 2015
Thursday, October 30 th	Year 6 Transition to Griffith High School

Week 5

Tuesday 4 th -Friday 7 th Nov	Stage 3 Excursion
Tuesday, November 4 th	Kinder 2015 Orientation 2.15-3pm
Wednesday, November 5 th	Kinder 2015 Orientation 2.15-3pm
Friday, November 7 th	2.15pm K-6 Assembly

Week 6

Tuesday, November 11 th	Kinder 2015 Orientation 2.15-3pm
Wednesday, November 12 th	Kinder 2015 Orientation 2.15-3pm
Thursday, November 13 th	Year 6 Transition to Griffith High School

Week 7

Tuesday, November 18 th	Kinder 2015 Orientation 2.15-3pm
Wednesday, November 19 th	Kinder 2015 Orientation 2.15-3pm
Friday, November 21 st	2.15pm K-6 Assembly

Week 8

Thursday, November 27 th	Year 6 Transition Day at Griffith & Wade High School
-------------------------------------	--

Week 9

Friday, December 5 th	Presentation Day
----------------------------------	------------------

Week 10

Monday, December 8 th	Volunteers Morning Tea
Tuesday, December 9 th	Year 6 Graduation P&C Whole Year Uniform Award
Wednesday, December 10 th	Stage 2 Excursion
Thursday, December 11 th	Stage 2 Excursion K-2 Frolic
Friday, December 12 th	Year 2 Graduation Silver & Gold Awards

Week 11

Tuesday, December 16 th	Platinum Award Day
Wednesday, December 18 th	Last Day for students
2015-Students return on Wednesday 28th January	

Grandparent's Day

Grandparents are invited to come along to Griffith PS to celebrate Grandparent's Day.

Grandparents are invited to visit their Grandchildren's classroom at 1.30pm on Friday the 24th October followed by a light afternoon tea for the Grandparents who are then invited to stay for assembly at 2.15pm in the school hall.

State Athletics Carnival

Best wishes to Danae Woods who is competing in the Discuss event at the PSSA State Athletics Carnival in Albury on Wednesday. This is the third year Danae has competed at a state level. In 2012 she placed 15th and in 2013 Danae came 14th. We are proud of Danae for qualifying once again and hope she enjoys the experience of competing for a 3rd time. Do your best Danae!

Eco Deco Arts Workshop

Last Wednesday, twelve Stage 3 students participated in an arts workshop with local artists, Hape Kiddle and Melanie Baulch. The workshop was organised by Derek Motion, the Regional Arts Development Officer for Western Riverina Arts. Students used materials from the environment to create a variety of outstanding art works. These were then exhibited at the Brett Naseby Gallery on Saturday morning.



Kindergarten Orientation

An orientation afternoon for those students commencing Kindergarten in 2015 and an information session for parents will be held on Wednesday 29th October 2014 at 2:15pm in the school hall.

Please come along and visit your new school and meet the teachers.

Further orientation dates will be given to you at this information session.

Students Enrolling and Students Leaving

This term we are busy planning classes for next year, 2015. If you are leaving at the end of this year and not returning next year could you please let Miss Hayman know as soon as possible.

If you have family or friends coming to GPS next year (and they have not already enrolled) could you also let Miss Hayman know this information please?

Your assistance will be greatly appreciated.

Stage Three Excursion

All years 5 & 6 students attending the Lake Burrendong excursion have received information about what to pack, itinary and medical information. Please note that medical notes are due by THIS Friday. In addition parents need to go online to dsr.nsw.gov.au/schoolmedicalform and complete the online information required. Full payment is due by Friday October 24th (next week).

P&C News

Thank you to everyone who supported our MEGA Garage sale by donating, buying or helping. Thank you to staff members and parents..... Rita McIver, Leanne McWhirter, Jude Hayman, Elise Russo, Vanessa Henderson, Rachel Dreyer, Amanda Adnum, Michelle McIntosh, Lili Henderson Clark, Jock Lander, Craig Waring-Bryant and Helen Lander for donating your time on Saturday to help us at the garage sale. We raised over \$1000.00!! Our P&C is small but we work very hard to support all the children at GPS e.g. the P&C subsidise excursions and swimming lessons.

The P&C Mini Fete is on Friday 14th November from 1pm-3pm. If you are interested in organising a stall, please contact me at school. All children will need at least **\$20.00** each to participate in and to enjoy the Fete.

The next P&C meeting will be on [Wednesday 5th November at 7pm](#) everyone is very welcome!

Thank you,
Helen Lander (P&C President)

School Canteen

Wednesday 15 th	Agnes Lolohea
Thursday 16 th	Kerri
Friday 17 th	Elena
Monday 20 th	Elena
Tuesday 21 st	Brenda

Welcome back to Term 4. Please remember to have lunch orders in by 9.30am.

Chicken Burgers	\$3.50
Pluto Pups	\$3.00
Chicken Nuggets	\$3.00
Chicken Wraps	\$3.00
Hot Dogs	\$3.00

Thank you, Brenda (Canteen Manager)

Mystery Jars

Your help is needed for the Mystery Jar Stall at the School Fete.

Each family is asked to contribute **one** jar filled with either lollies and/or other treats in order to make the stall a huge success. Of course, if your family were able to contribute more jars that would be absolutely wonderful and your kindness would be most appreciated.

BOOK FAIR IS COMING!!

When: 27TH to 31st October

Where: GPS Library

**Time: Before and After School,
Lunch and Fruit Break**

**There are lots and lots of books to
buy, priced from \$1 up!
Variety items as well.**

A fun day for all

Multicultural Council of Griffith

CULTURAL FESTIVAL

A griffith commUNITY celebration

Food Dance Music

SATURDAY, 18TH OCTOBER, 2014

MEMORIAL PARK, BANNA AVE. Griffith - 10.30am - 3pm

Plus: Henna painting, Face painting, Balloons, Spaghetti eating competition, jumping castle

NSW Government

Supported by the Community Relations Commission For a multicultural NSW

Griffith City Council, George Duncan Electric, Volunteers

GPS Mini Fete

Friday 14th November
1pm– 3pm



- * SAUSAGE SIZZLE
- * JUMPING CASTLE
- * WHITE ELEPHANT STALL



- * MYSTERY JARS
- * SAMPLE BAGS
- * GO CARTS
- * DRINKS & ICE BLOCKS
- & LOTS MORE



**Come to the Fete, it
will be great!**



Win a \$5.00 Canteen Voucher Week 2

Give your newsletter to your parent or carer to read. Ask them to sign this slip and put it in the box in the front office. If your slip is drawn out at Friday's assembly, you will win **one \$5 canteen voucher!** Two slips will be drawn out at each assembly.

Student / Family name: _____

Parent / Carer Signature: _____



Celebrating Carers Week 2014

Yoga for Parents and Carers



TIME OUT FOR PARENTS / CARERS

Cerebral Palsy Alliance would like to offer a yoga class for parents and carers of child with a disability.

This is a relaxing yoga program to reduce stress, support health and to create an environment for self care. The classes provide a physically nurturing space for carers to practice yoga, using a range of yoga tools.

Classes are for all skill and fitness levels and will include breath awareness practices, mindfulness, asana (physical postures), visualisation, and yoga nidra (deep relaxation).

Classes are **free** but bookings are essential. Please contact us today to secure your spot!



WHO Parents / Carers

WHEN 10 am
3rd Wednesday
of each month

15th October
19th November
17th December
21st January
18th February
18th March

VENUE Country Womens Association Hall
29 Banna Avenue
Griffith, NSW, 2680

RSVP Marguerite Raven
Tel: 02 6921 9743
mraven@cerebralpalsy.org.au



CEREBRALPALSY.ORG.AU

