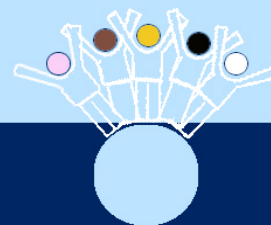


Griffith Public School

A quality education for all



NEWSLETTER TERM 4 WEEK 3

Principal: Miss Jude Hayman

Coolah Street, Griffith NSW 2680 T 6962 3199 F 6962 3451 E griffith-p.school@det.nsw.edu.au

Calendar Term 4 2014

*Please note dates from week to week as there are occasionally some changes.

Week 3

Friday, October 24th **1.30pm Grandparent's Day**
2.15pm K-6 Assembly

Week 4 School Library BOOK FAIR

Wednesday, October 29th 2.15pm Parent Meeting for Kindergarten students starting in 2015

Thursday, October 30th Year 6 Transition to Griffith High School

Week 5

Tuesday 4th-Friday 7th Nov Stage 3 Excursion

Tuesday, November 4th Kinder 2015 Orientation 2.15-3pm

Wednesday, November 5th Kinder 2015 Orientation 2.15-3pm

Friday, November 7th 2.15pm K-6 Assembly

Week 6

Tuesday, November 11th Kinder 2015 Orientation 2.15-3pm

Wednesday, November 12th Kinder 2015 Orientation 2.15-3pm

Thursday, November 13th Year 6 Transition to Griffith High School

Week 7

Tuesday, November 18th Kinder 2015 Orientation 2.15-3pm

Wednesday, November 19th Kinder 2015 Orientation 2.15-3pm

Friday, November 21st 2.15pm K-6 Assembly

Week 8

Thursday, November 27th Year 6 Transition Day at Griffith & Wade High School

Week 9

Friday, December 5th Presentation Day

Week 10

Monday, December 8th Volunteers Morning Tea

Tuesday, December 9th Year 6 Graduation
P&C Whole Year Uniform Award

Wednesday, December 10th Stage 2 Excursion

Thursday, December 11th Stage 2 Excursion
K-2 Frolic

Friday, December 12th Year 2 Graduation
Silver & Gold Awards

Week 11

Tuesday, December 16th Platinum Award Day

Wednesday, December 18th Last Day for students

2015-Students return on Wednesday 28th January

Grandparent's Day

Grandparents are invited to come along to Griffith Public School to celebrate Grandparent's Day.

Grandparents are invited to visit their grandchildren's classroom at 1.30pm this Friday the 24th October followed by a light afternoon tea for the Grandparents who are then invited to stay for assembly at 2.15pm in the school hall.

Enviro Champs Presentation

Tomorrow our Year 5 Enviro Champs; Kyle Smyth, Riley Clark, Jorja Langman and Sasha Halliburton head to Junee to present their Worm Farm project that they have been diligently working on for the past two terms. They have worked hard, cleaning an area to create a worm farm to reduce the amount of food waste being placed into our bins. They have designed posters for the class bins and have begun building the first layer of the worm farm.

The Enviro Champs would like to thank SRC for their financial help, Dirty Dozen for their man power in cleaning the area, Shaun and some Year 6 boys for their assistance in the cleaning and the building of the rings for the various layers. Finally they would like to thank Sally Russell and Darron Watt for their support and visits throughout the year. We have had a lot of fun creating this and hope that GPS supports the worm farm and reduces our amount of food waste being dumped into bins.



Students Enrolling and Students Leaving

This term we are busy planning classes for next year, 2015. If you are leaving at the end of this year and not returning next year could you please let Miss Hayman know as soon as possible.

If you have family or friends coming to GPS next year (and they have not already enrolled) could you also let Miss Hayman know this information please?

Your assistance will be greatly appreciated.

Kindergarten Orientation

An orientation afternoon for those students commencing Kindergarten in 2015 and an information session for parents will be held on Wednesday 29th October 2014 at 2:15pm in the school hall.

Please come along and visit your new school and meet the teachers.

Further orientation dates will be given to you at this information session.

Cooking with ESL students

Last week some of our ESL students bought the ingredients, cooked and ate their own vegetarian pizzas. They enjoyed practising their English speaking and writing skills in a practical way. The students loved the pizzas – there were even some left over for their teachers!



Stage Assembly Awards

KB Alana Orake Paolo Asomua Ebby Sauturaga	KL Deekoda Reynolds Ramin Ghaffari Mitchell Halliburton
KM Atif Akbar Savannah Lucas Robin Mataora	KR Delijah Samuelu John Tinomana Layla Corkery
1S Chloe Towers Kye Banfield Jiya patel	1B Pauline Naea Ami Ahmet Kurt Jo Harris
1D Demetri Samuelu Tushana Manutai Dominic Chivers	2T Patu Tora Jannet Time Isabel Vozzo
2L Brian Naua Matthew Barbaro Feleti Faigafa	2C Joe Tora Jaylan Tia Spencer Henderson-Clark
3/4P Senay Kunduz Tyrone Sloane-Brown Brenda Goolagong	3/4D Shanice Penrith Serena Ngu Delilah Samuelu
3/4S Chris Tupuola Kapena Ataala Tairell Corkery	3/4L Beau Harrison Siuaki Tuiaki Kelemete Maiara

Stage Three Excursion

All years 5 & 6 students attending the Lake Burrendong excursion have received information about what to pack, itinerary and medical information. Please note that medical notes are due by THIS Friday. In addition parents need to go online to dsr.nsw.gov.au/schoolmedicalform and complete the online information required. Full payment is due by Friday October 24th (next week).

State Athletics Carnival

Last Wednesday Danae Woods travelled to Sydney to compete at the State Athletics Carnival, held at the Homebush Athletics Centre. Danae competed in the senior girls discus event and was placed in the top 20 girls in NSW, with a throw approximately 25 metres. This was an outstanding achievement for Danae and one that she should be extremely proud of.

Selective High School Placements 2016

Selective High Schools cater for highly achieving academically gifted students. Most Selective High Schools are located in Sydney, although there are exceptions including Yanco Agricultural High School. Some have targeted positions for Aboriginal and Torres Strait Islander students. Application to these high schools is open to students in Year 5 from October 14th to November 17th 2014. These students will be commencing Year 7 in 2016.

Applications are taken online only at www.schools.nsw.edu.au/shplacement. Applicants will be required to sit an entry test in March 2015.

If you would like more information about Selective High Schools, please contact Mrs. Campbell.

Keys Lost

At the P&C Garage Sale on the 11th of October a lady lost her set of keys. They were attached to a butterfly key ring. If you find the keys amongst your garage sale purchases please return them to the school. Thank you.

P&C News

The P&C Mini Fete is on Friday 14th November from 1pm-3pm. If you are interested in organising a stall, please contact me at school. All children will need at least \$20.00 each to participate in and enjoy the Fete. The next P&C meeting will be on Wednesday 5th November at 7pm. Everyone is very welcome!

Thank you,
Helen Lander (P&C President)

Mystery Jars

Your help is needed for the Mystery Jar Stall at the School Fete.

Each family is asked to contribute **one** jar filled with either lollies and/or other treats in order to make the stall a huge success. Of course, if your family were able to contribute more jars that would be absolutely wonderful and your kindness would be most appreciated.

School Canteen

Wednesday 22 nd	Agnes Lolohea
Thursday 23 rd	Cathy
Friday 24 th	Elena
Monday 27 th	Elena
Tuesday 28 th	Brenda

Thank you to last week's helper, Agnes Lolohea.

Chicken Burgers	\$3.50
Chicken Nuggets	\$3.00
Hot Dogs	\$3.00

Thank you, Brenda (Canteen Manager)

BOOK FAIR IS COMING!!

When: 27TH to 31st October

Where: GPS Library

**Time: Before and After
School, Lunch and Fruit
Break**

**There are lots and lots of
books to buy, priced from \$1
up!**

Variety items as well.

Win a \$5.00 Canteen Voucher Week 3

Give your newsletter to your parent or carer to read. Ask them to sign this slip and put it in the box in the front office. If your slip is drawn out at Friday's assembly, you will win **one \$5 canteen voucher!** Two slips will be drawn out at each assembly.

Student / Family name: _____

Parent / Carer Signature: _____

GPS Mini Fete

Friday 14th November
1pm– 3pm



- * SAUSAGE SIZZLE
- * JUMPING CASTLE
- * WHITE ELEPHANT STALL



- * MYSTERY JARS
- * SAMPLE BAGS
- * GO CARTS
- * DRINKS & ICE BLOCKS
- & LOTS MORE



**Come to the Fete, it
will be great!**