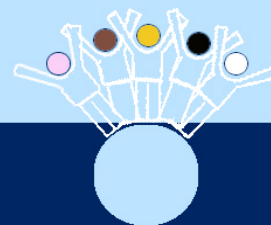


Griffith Public School

A quality education for all



NEWSLETTER TERM 4 WEEK 6

Principal: Miss Jude Hayman

Coolah Street, Griffith NSW 2680 T 6962 3199 F 6962 3451 E griffith-p.school@det.nsw.edu.au

Calendar

Term 4 2014

*Please note dates from week to week as there are occasionally some changes.

Week 6

Tuesday, November 11th Kinder 2015 Orientation 2.15-3pm

Wednesday, November 12th Kinder 2015 Orientation 2.15-3pm

Week 7

Tuesday, November 18th Kinder 2015 Orientation 2.15-3pm

Wednesday, November 19th Kinder 2015 Orientation 2.15-3pm

Thursday, November 20th Year 6 Transition to Griffith High School

Friday, November 21st 2.15pm K-6 Assembly
12pm PACE / GPS ECLA Program

Week 8

Thursday, November 27th Year 6 Transition Day at Griffith & Wade High School

Friday, November 28th 12pm PACE / GPS ECLA Program

Week 9

Friday, December 5th Presentation Day

Week 10

Monday, December 8th Volunteers Morning Tea

Tuesday, December 9th Year 6 Graduation
P&C Whole Year Uniform Award

Wednesday, December 10th Stage 2 Excursion

Thursday, December 11th Stage 2 Excursion
K-2 Frolic

Friday, December 12th Year 2 Graduation
Silver & Gold Awards

Week 11

Tuesday, December 16th Platinum Award Day

Wednesday, December 17th Last Day for students

2015-Students return on Wednesday 28th January

Year 6 Graduation Bear

All Year 6 students have received an order form for a graduation bear. If you would like to purchase one, payment of \$14.00 needs to be received by November 21st. These are a great memento for students of their primary school years. Samples to view are on display in the office.



Kindergarten Orientation

Kindergarten students beginning in 2015 are currently participating in Kindergarten Orientation. The students are invited to come to school every Tuesday and Wednesday afternoon from 2.15-3pm until the 19th of November (see the calendar at the front for all the dates).

If you have any friends or family members with children who are starting Kindergarten next year please tell them to contact the school so they don't miss out on orientation and we can make sure the children have been enrolled. Thank you.

P&C News

Our Fete is getting closer!
IT IS ON THIS FRIDAY!!

It is very exciting to have the Leeton Lions Club train coming back.

Each child will need at least \$20 to participate in and to enjoy the Fete.

There will be lots to do and to buy. There will be no free tokens given out this year.

Sample bags \$8.00.

A ride on the train \$2.00

Sausage sizzle \$2.00

Games and activities will range in price from 50c to \$2.00

Invite all your friends and relatives.
Come to the Fete, it will be great!!

Thank you for your support,
Helen Lander (P&C President)



Mystery Jars / Bags

Your help is needed for the Mystery Jar Stall at the School Fete.

Each family is asked to contribute **one** jar or bag filled with either lollies and/or other treats in order to make the stall a huge success. Of course, if your family were able to contribute more jars/bags that would be absolutely wonderful and your kindness would be most appreciated.

School Canteen

Wednesday 12 th	Elena
Thursday 13 th	Rachel Dreyer
Friday 14 th	Kerri
Monday 17 th	Elena
Tuesday 18 th	Brenda

The canteen will be selling ice cream cones at the fete for \$1 and cans of soft drink for \$2 as well as other yummy treats!

Thank you, Brenda (Canteen Manager)

PACE

PACE and GPS are excited to announce that we are holding a four week parenting group. Our third session is on Friday 21st November.

When Friday 21st November
Friday 28th November
Time 12pm – 1pm
Where GPS Meeting Room

The ECLA Program (Engage, Learn, Community, Achieve) will empower parents/caregivers in their homes and within the school.

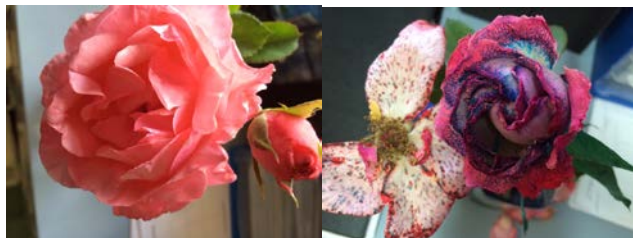
The program is FREE. We will offer a light lunch and free transport if needed. For further information, contact Naomi 0411875335, Fiona 0418765114 or Maxine 0413493175 if transport is required.

2013 Coolah Chronicle

If you would like to purchase a copy of last year's Coolah Chronicle, our school magazine, we have a few remaining copies available from the office for the discounted price of \$10.

A dye tip to recolour your flowers...

Year 2 have been growing plants and learning about what they need to survive. They performed a dye experiment to see how the stem absorbs water. Here is what happened to the petals of the flowers when food dye was added to the water.



Year 2's Orange Sculpture Visit

Year 2 went for a long walk to the orange sculptures. My favourite was the carriage because I like horses.

By John

I liked the hamburger and the robot the best.

By Sam

While we were walking it was as hot as a volcano, when we finally got there we ate some delicious fruit.

By Esther

I loved the sandwiches because we got to make them and I liked the cucumber.

By Jada

The best part was being able to sit and climb on some of the sculptures and getting our photo taken.

By Ailaulau

My favourite was the chicken because it was funny that it was eating chicken!

By Matthew

Win a \$5.00 Canteen Voucher Week 5

Give your newsletter to your parent or carer to read. Ask them to sign this slip and put it in the box in the front office. If your slip is drawn out at Friday's assembly, you will win **one \$5 canteen voucher!** Two slips will be drawn out at each assembly.

Student / Family name: _____

Parent / Carer Signature: _____

GPS

P&C Fete



The Fete is on
FRIDAY

Friday 14th

November



12.30pm-3pm



• Sample bags

• Face Painting

• Sausage sizzle

• Leeton Lions Club Train

• Jumping castle

• White Elephant stall

EVERYONE IS WELCOME!!

**Each child will need
about \$20 to join in the
Fete, as there will be
lots to do and buy!!**

*Come to the Fete,
it will be great!!*

Alma Bamblett

"Learning Circle"

When: Every Wednesday

Where: Alma Bamblett Centre

Time: 3.30pm –5.30pm

Parents and kids are welcome to come down to the Alma Bamblett Centre for a learning circle. Just bring your homework down and we can help you do it. We can also show parents how to help their kids with homework. So parents please come with your kids... Any enquires please contact us.

Afternoon tea provided

Naomi Misi 0411875335

Fiona Ingram 0418765114

Alma Bamblett

"Drop In Centre"

When: Every Monday

Where: Alma Bamblett Centre

Time: 10am –12pm

Parents are welcome to the Alma Bamblett Centre for a drop in. We can help parents fill out simple forms or paper work, or simply just drop in for a yarn... We will provide morning tea and a cuppa. Any enquires please contact us.

Morning tea provided

Naomi Misi 0411875335

Fiona Ingram 0418765114

You can change things

FAMILY WELL BEING

Free empowerment program in Griffith

10-13 November 2014
9.30am-4pm
Location: Rural Clinical School, 30 Noorebar Avenue, Griffith

Free morning/afternoon tea and lunch provided.

We can help with transport if you need it.

The Family Well Being Empowerment Program

Improve your life by starting with your qualities!
This Empowerment program helps you to understand basic human needs and qualities and how you can use your qualities to improve your life.

Build positive relationships!
Learn about relationships, emotions and communications. We'll teach you skills how to deal with conflict in a positive way and build positive relationships.

Look after yourself and others!
This program will also help you to look after yourself and how you can help and support your family and friends.

"I learned that people are able to think for themselves. It gave me empowerment, to think for myself, for my family—finding solutions to get me and my children out of situations."

Maldahnalanga Project

Please let us know if you would like to join:

Mieke Snijder : m.snijder@unsw.edu.au Tel 6246 1187 Mob: 04 559 396 97 NATIONAL DRUG AND ALCOHOL RESEARCH CENTRE